

Responsible Adoption Wins in AI

Jason Daniels, Global Head, Market Access & Strategy, RapidAI
Chief Business Officer, RapidAI

Introduction

AI adoption in healthcare is surging. Responsible integration and trust are key to a successful ROI.

The problems to solve

- Radiology demand is rising faster than workforce capacity
- Increasing workloads result in burnout, which can lead to:
 - Missing findings
 - Delays in patient care

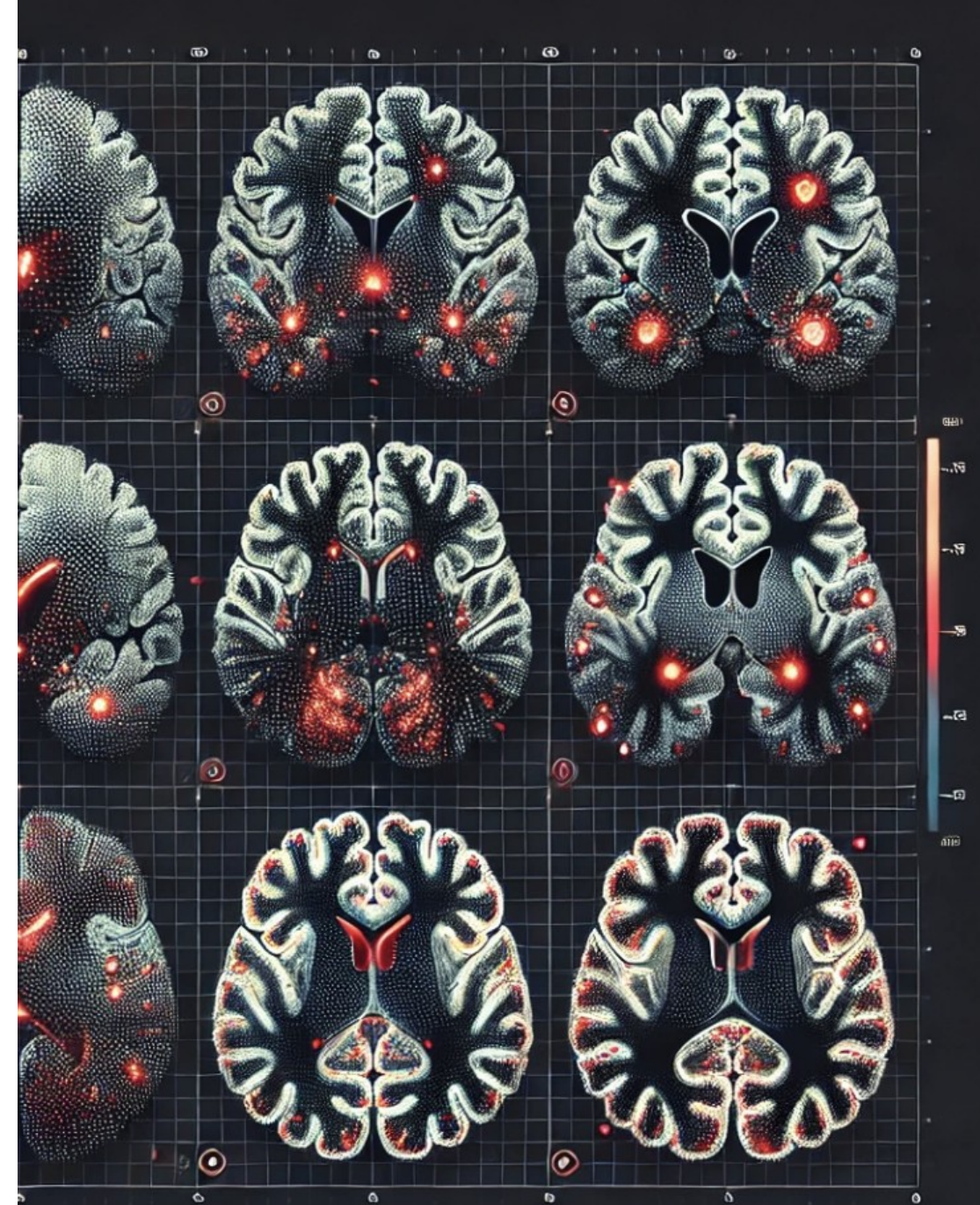
The problems to avoid

- AI deployments may stall due to:
 - Limited clinical validation
 - Poor workflow integration
 - Alert fatigue and false positives

What is responsible adoption in imaging?

- Regulatory readiness
- Clinical validation
- Workflow integration
- Governance and oversight
- Resilience and security

Responsible AI requires a reliable infrastructure



Where Responsible AI Delivers

Clinical Impact

- Improved diagnostic consistency across readers [40265427](#)
- Faster triage for time-sensitive conditions

Operational Impact

- Reduced turnaround times
- Better prioritization of critical cases
- Fewer downstream delays and repeat imaging
- Improved collaboration across care teams

Human Impact

- Lower cognitive burden and burnout rates [41431407](#)
- More time allowed for complex-decision making

Scaling AI Safely Across Health Systems

Challenges to scaling:

- Heterogenous infrastructure
- Variable staffing and expertise
- Security and uptime requirements

What enables successful scale:

- Flexible deployment models
 - On-prem, cloud, or hybrid
- Parallel processing
- Modular expansion
- Ability to integrate third-party algorithms responsibly

Equity and Accessibility by Design

Hospitals in rural areas may lack advanced imaging technologies and specific expertise. The integration of responsible AI by design can:

01

Extend decision support beyond tertiary centers

02

Enable earlier intervention and referral

03

Create a standardized quality of care regardless of geography



What Successful Adoption Involves

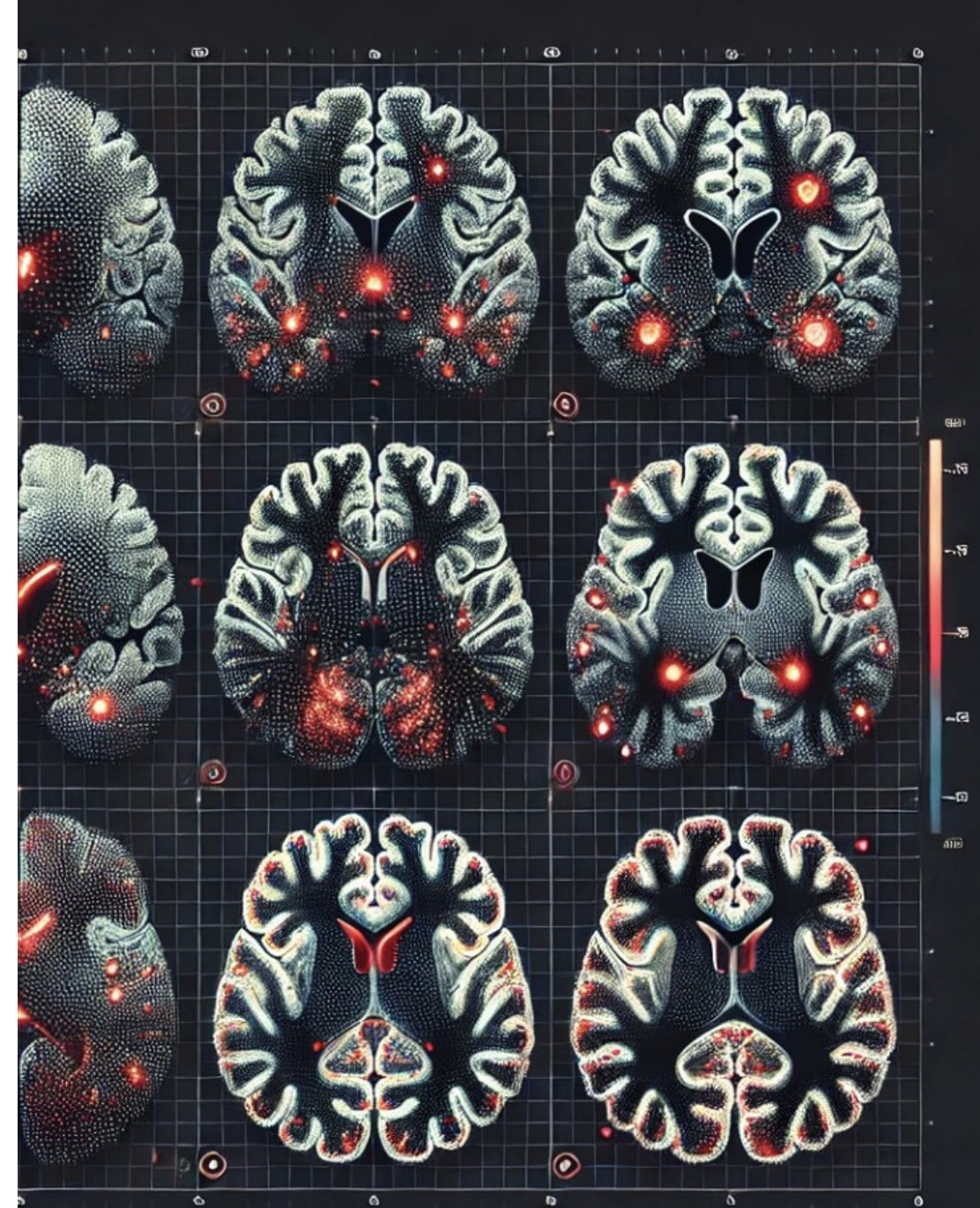
- Start with a goal of finding solutions for clinical problems
- Involve clinicians early and continuously
- Prioritize integration into existing workflows
- Measure outcomes, not just usage
- Invest in governance, not just deployment
- Treat AI as long-term infrastructure

Conclusion

In the next decade, healthcare AI will move from proof-of-concept to full strategic transformation, as widespread clinical adoption is expected closer to 2030.

Success will be defined by:

- Safety
- Evidence
- Trust



Q&A Session

